



*20. Mai 2026*

**17. Bechtle**  
**IT-Forum**  
**Thüringen**  
Steigerwald Stadion Erfurt

**20**  
**26**

# Vom Perimeter bis zur Identität mit Cisco Secure

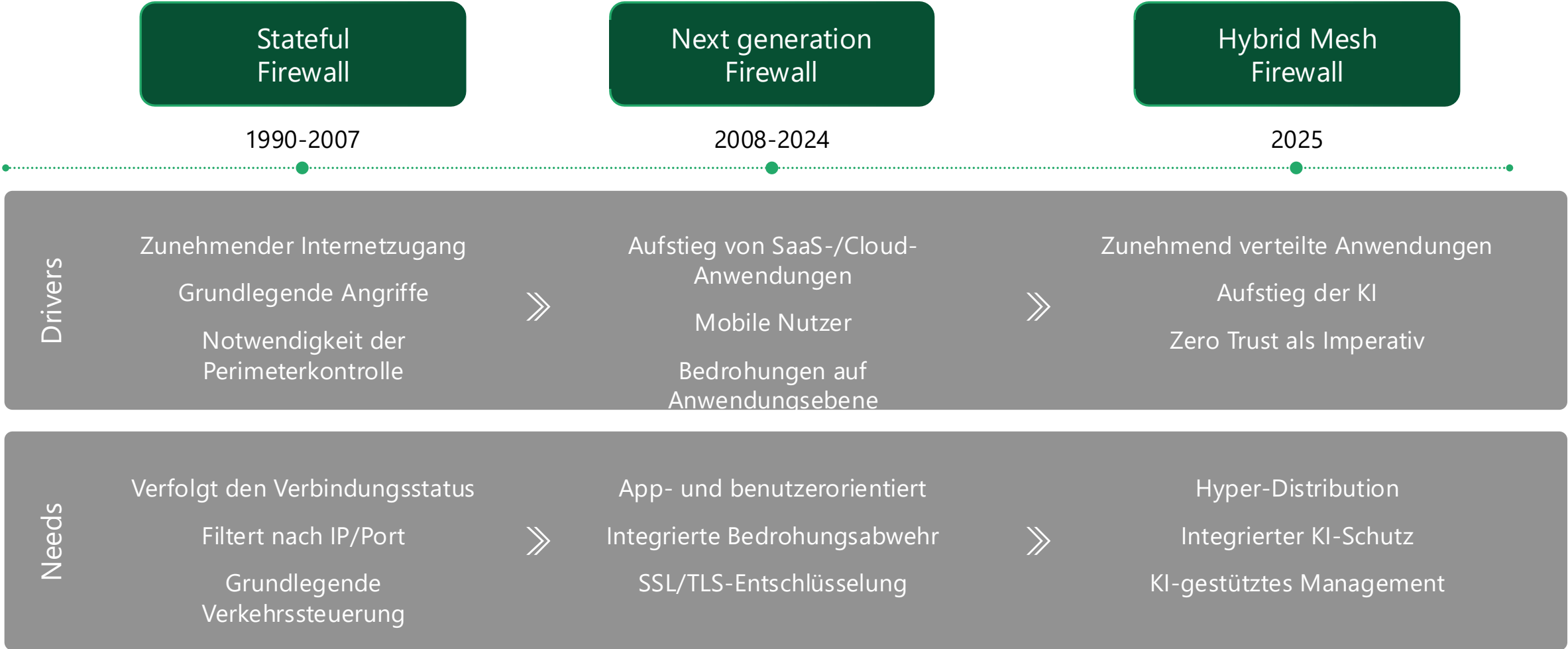
# Vom Perimeter bis zur Identität mit Cisco Secure

- 1. Perimeter**
- 2. SSE**
- 3. Duo**
- 4. Identity Intelligence**
- 5. Security Cloud Control**

**Perimeter**

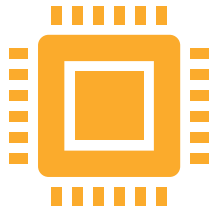
**2**

# Die Reise der Firewall



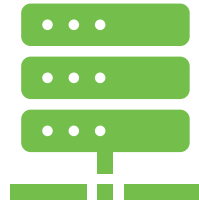
# Vielseitige Firewall-Verwaltung - unterstützt alle Formfaktoren

Jede Option bietet einen einzigartigen Mehrwert und sorgt für Effizienz in Ihrem Anwendungsfall.



Cisco Hardware

- Hochleistungsfähige Hardware
- Optimaler Datenschutz



Private Cloud

- Hardwareunabhängig
- Kostengünstige Vor-Ort-Lösung



Public Cloud

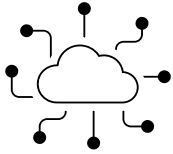
- Skalierbarkeit
- Eigene Lizenzen können benutzt werden



Cloud-delivered

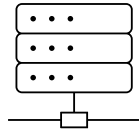
- Geringere Betriebskosten
- Keine Wartungskosten

# Use Cases



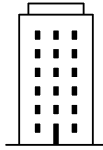
## Internet Edge

- High availability and redundancy
- Dynamic routing and address translation
- Integration with end point security
- Integration with NAC network access control



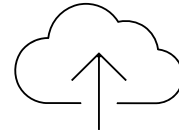
## Data Center

- High availability
- Scalability
- Very high bandwidth, very low latency
- Cloud scale
- Hyper-density and high performing volts
- DDoS
- IPS capability
- Multi-instance



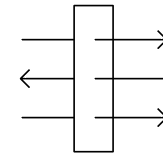
## Branch and Campus

- Site to site VPN
- High availability
- Dynamic routing
- Application visibility and control
- Breach detection
- Threat intelligence
- Incident response
- Dual-WAN
- Application Aware Intelligent Routing(DIA)



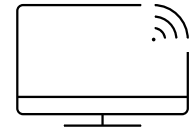
## Cloud/Virtual

- High availability
- Support for DPDK and SRIOV
- Internet edge or VPN gateway
- SD-WAN backhaul
- NSEW inspection
- Inbound inspection
- Device acting as edge



## Secure IPS

- Separation of duties
- IPS capability
- Superior threat efficacy
- Threat intelligence
- TLS decryption
- Mirror traffic and deploy in active, inline, or passive mode
- Network reliability
- Scalability



## Hybrid ZTNA & Remote Access

- Cisco VPN and third-party VPN clients
- Integration with end point security
- Authentication, Authorization, Accounting
- Zero Trust Clientless access to private applications
- SD-WAN

# Perimeter – Welcome Back Cisco Firewall!

ISA 3000 Series



≤0.4Gbps NGFW

200 Series



1.5Gbps NGFW

1010 & 1100 Series



≤3Gbps NGFW

1200 Compact Series



≤9Gbps NGFW

1200 Series



≤18Gbps NGFW

3100 Series



≤45Gbps NGFW  
16x Clustering

4200 Series



≤145Gbps NGFW  
16x Clustering

6100 Series



520-630Gbps NGFW  
16x Clustering

IOT

Branch

Campus / Data Center

## Private Cloud



## Public Cloud



## Gov/IC Cloud



# Supported Platforms

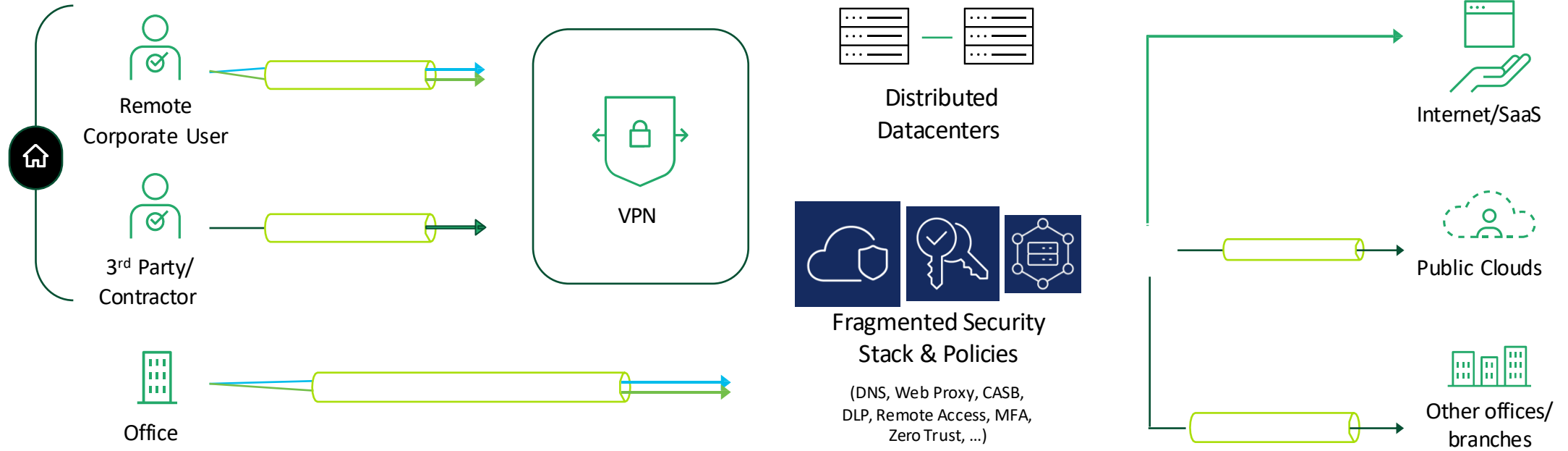
FMC	FTD	ASA
FMC1600 FMC1700 <b>FMC 1800 – NEW</b>  FMC2600 FMC2700 <b>FMC 2800 -- New</b>  FMC4600 FMC4700 <b>FMC 4800 -- New</b>	<b>Secure Firewall 200 Series -- NEW</b> Firepower 1000 Series Secure Firewall 1200 Compact and Rackmount Secure Firewall 3100 Series Secure Firewall 4200 Series Firepower 4100 - <b>4112, 4115, 4125, and 4145 ONLY</b> Firepower 9300 - <b>SM-40, SM-48, SM-56 ONLY</b> <b>Secure Firewall 6100 Series -- NEW</b> ISA3000	<b>Secure Firewall 200 Series -- NEW</b> Firepower 1000 Series Secure Firewall 1200 Compact and Rackmount Secure Firewall 3100 Series Secure Firewall 4200 Series Firepower 4100 - <b>4112, 4115, 4125, and 4145 ONLY</b> Firepower 9300 - <b>SM-40, SM-48,</b>  <b>Secure Firewall 6100 Series -- NEW</b> ISA3000
VMware ESXi 6.5, 6.7, 7.0, 8.0 (FMCv25/FMCv300) KVM (FMCv25/FMCv300) OpenStack (FMCv25 only) Nutanix (FMCv25 only) Hyper Flex (FMCv25 only) Hyper-V (FMCv25 (7.4.1+))	VMware ESXi 6.5, 6.7, 7.0, 8.0 KVM OpenStack (FMC-managed only) CVIM Nutanix Hyperflex	VMware ESXi 6.5, 6.7, 7.0 , 8.0 KVM OpenStack CVIM Nutanix Hyperflex Hyper-V ASAc
Azure (FMCv25 / FMCv-300) AWS (FMCv25 / FMCv-300) GCP (FMCv 25 only) OCI (FMCv25 / FMCv-300) Alibaba (FMCv25 only)	Azure (FMC or FDM managed) AWS (FMC or FDM managed) GCP (FMC or FDM managed) OCI (FMC-managed only)	Azure AWS GCP OCI Alibaba

**SEE**

**2**

# SSE – Die Herausforderung

Eine Architektur die nicht für hybriden Einsatz aufgebaut wurde



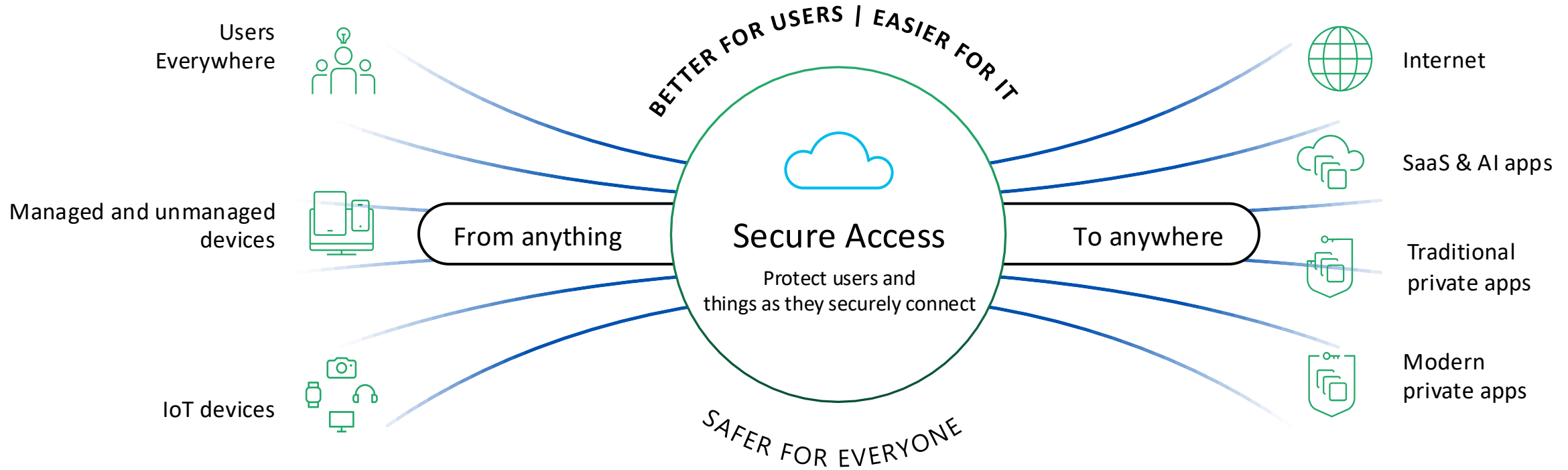
Poor user experience  
Lower productivity

Large sets of individual solutions and vendors  
Complexity of operations and costs

Gaps in security posture born out of complexity and fragmentation

# SSE – Cisco Secure Access

Modernize your defense with converged cloud security grounded in Zero Trust



Remote

Campus

Regional

Mobile

Airplane

Overseas

Field

...



# SSE – Cisco Secure Access

## Core SSE



Secure Web Gateway (SWG)



Cloud Access Security Broker (CASB) and DLP



Zero Trust Network Access (ZTA)



Firewall as a Service (FWaaS) and IPS

Cisco delivers the core and more in a single subscription...



DNS Security



Multimode DLP



Advanced Malware protection



Sandbox



Talos Threat Intelligence



VPN as a Service



Digital Experience Monitoring\*



Remote Browser Isolation\*

## Add-on solutions



SD-WAN



XDR

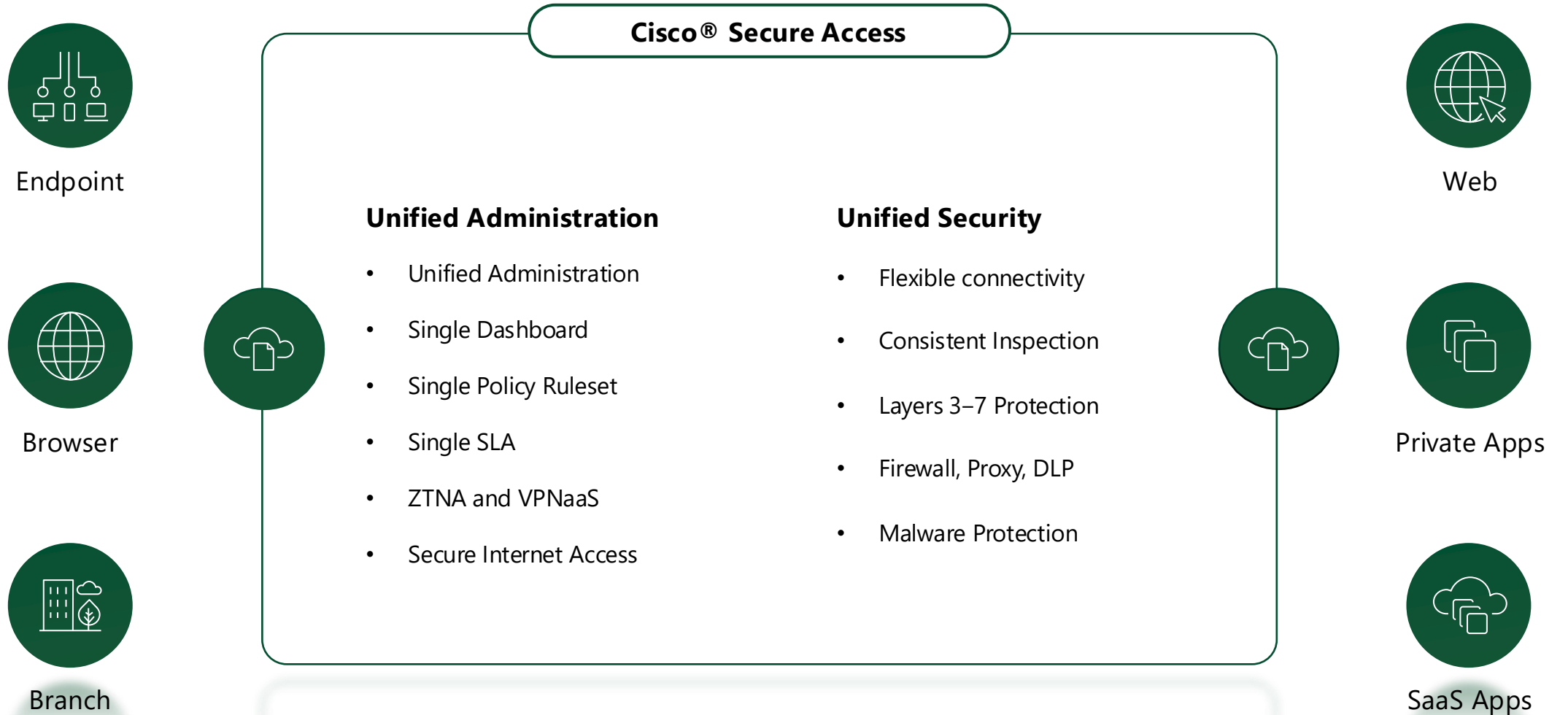


DUO MFA/SSO



CSPM

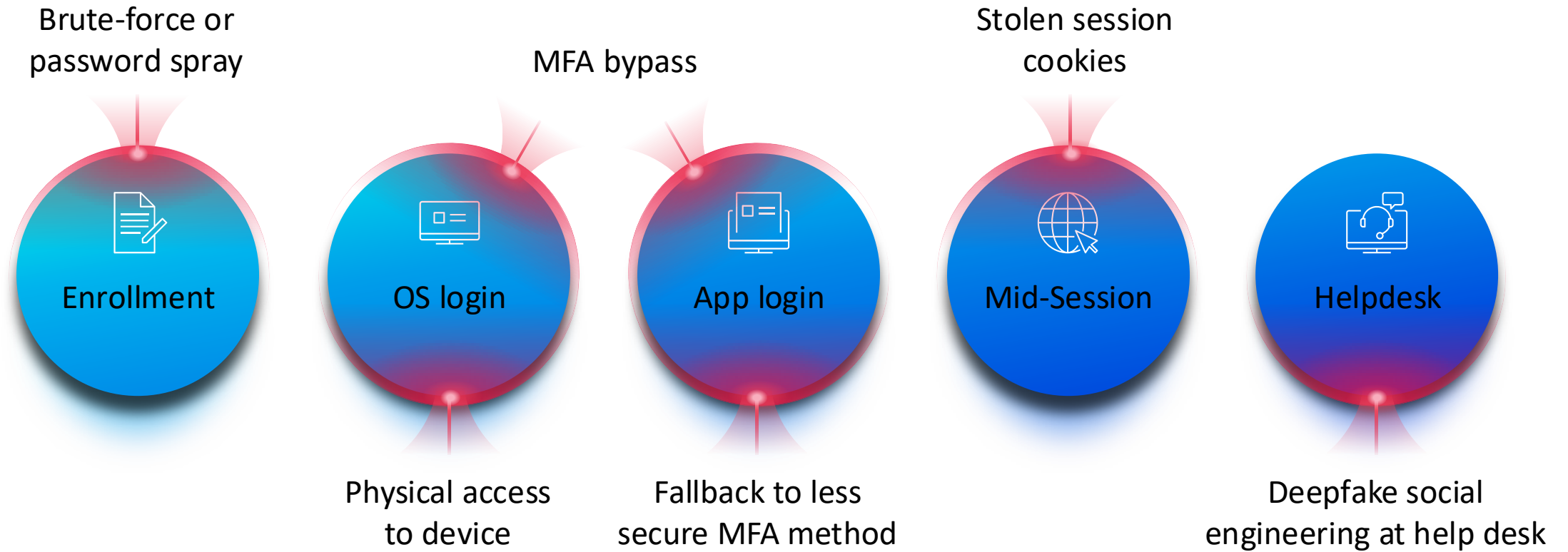
# SSE – Unified Architecture



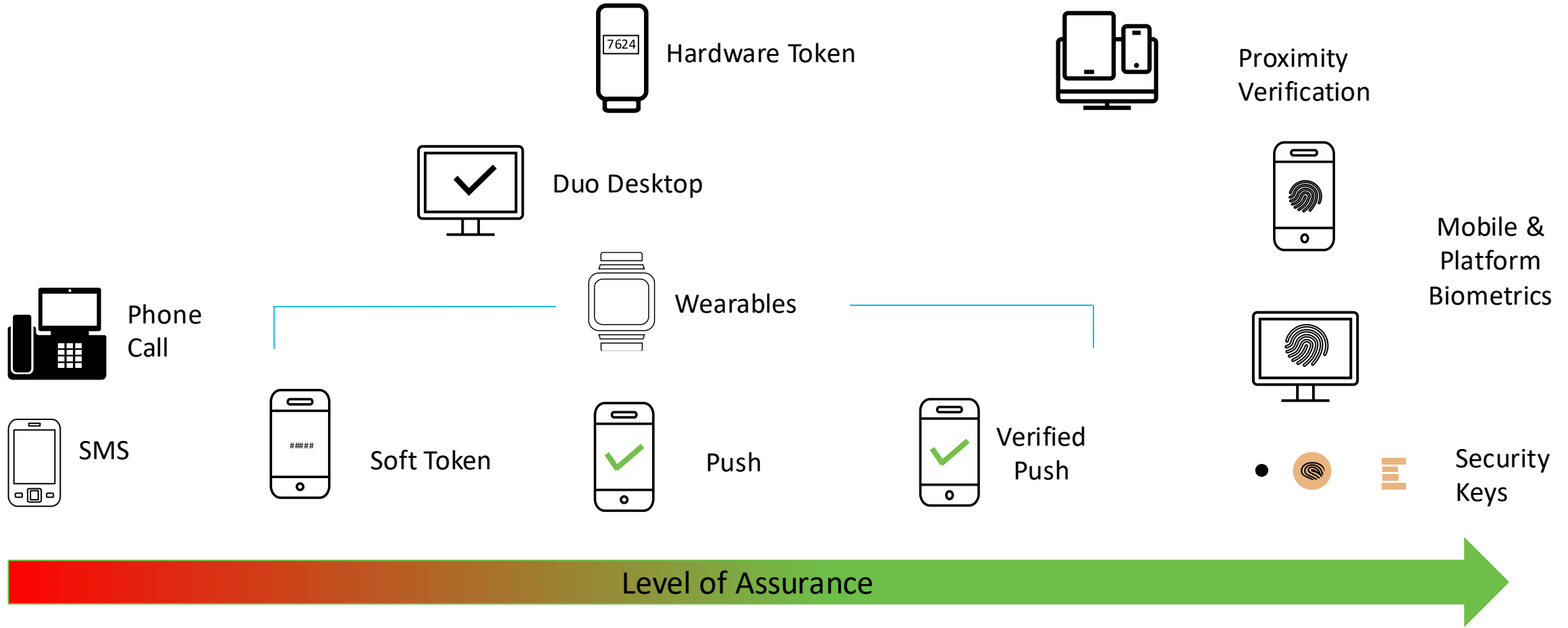
**Duo**

**3**

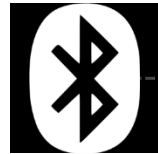
# Hacker rechnen mit MFA



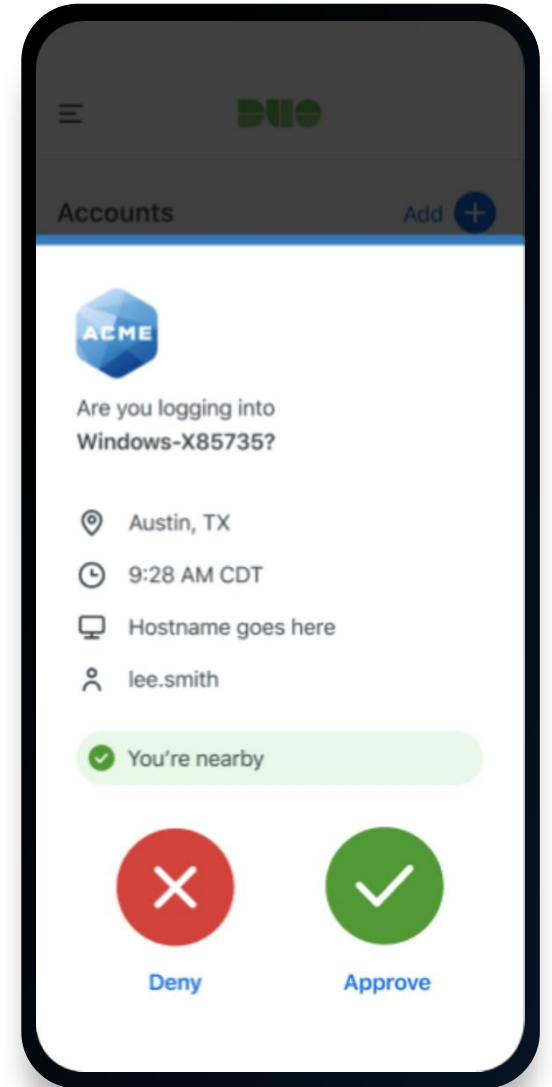
# Duo - Multi-Factor Authentication Härtegrad



# Duo – Nearby Funktion



Bluetooth Low Energy (BLE)



# SSO/IAM-Unterstützung von Drittanbietern

- Native Integration von Duo über mehrere Identitäts-/SSO-Plattformen
- Konsistente Endbenutzererfahrung und Sicherheitskontrollen über alle Anwendungen hinweg bereitstellen
- Einfaches Erreichen von Gerätetransparenz und Vertrauen über alle Anwendungen hinweg
- **Eigenes AD**



# Erfüllung von Compliance- und Regulierungsanforderungen



Hilft bei der Erfüllung der NIST 800-63 und 800-171 Anforderungen an die Zugangssicherheit



Angepasst an die GDPR-Datenschutzgesetze in Europa



Duo wurde von einem qualifizierten, unabhängigen Wirtschaftsprüfer geprüft, der die Implementierung der BSI C5-Kontrollen bewertete und ihre operative Wirksamkeit überprüfte.

**Identity Intelligence**

**4**

# Cisco Identity Intelligence



Users



Machines



Services



Apps



Data



Behaviors



Auth0

Workday

Okta

GitHub

ServiceNow

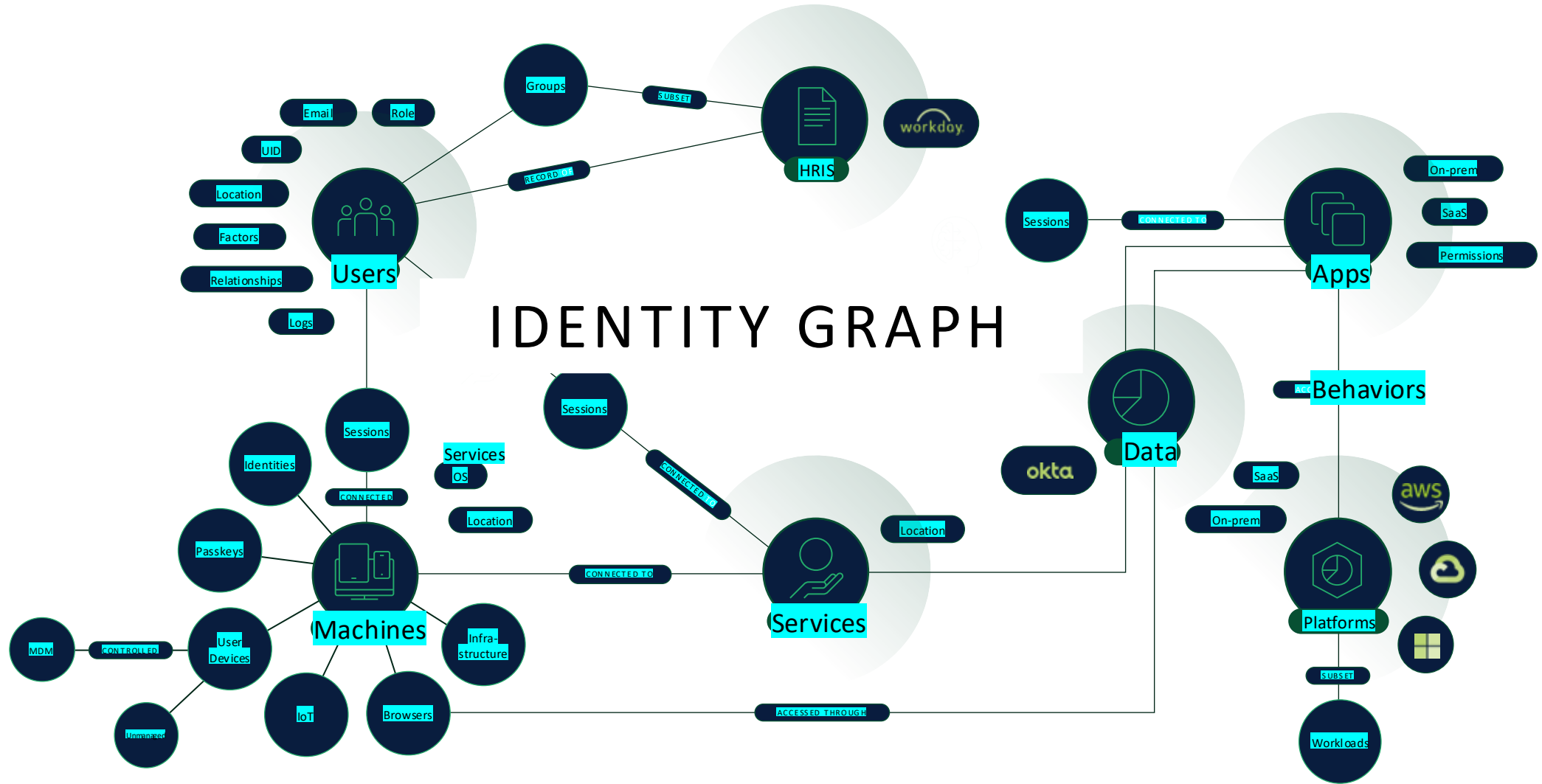
Microsoft



Google

Amazon

# Cross-Platform Insights



# Use Cases für Identity Intelligence:

- Erstellen eines Benutzerinventars
- Überwachung von Konten von Nicht-Mitarbeitern
- MFA-Einführung und – Verwendung
- IAM-Berichterstattung und - Analyse
- Benutzer- oder Sitzungsuntersuchung
- Kontinuierliche Erkennung von Bedrohungen
- Lizenz-Optimierung

# Lizenzierung

## Free

1-10 Users

[Try Duo Free](#)

- Add up to 10 users
- Strong MFA
- Seamless integrations
- Free authenticator app

[Explore Duo Free](#)

## Essentials

\$3/User/Month

[Try Duo Essentials](#)

[Buy Now](#)

Includes everything in Duo Free plus:

- Single Sign-On
- Verified Duo Push
- Passwordless authentication
- Trusted Endpoints
- User group policies

[Explore Duo Essentials](#)

## Advantage

\$6/User/Month

[Try Duo Advantage](#)

[Buy Now](#)

Includes everything in Duo Essentials plus:

- Cisco Identity Intelligence
- Duo Passport
- Risk-Based Authentication
- Adaptive access policies
- Complete device visibility
- Device health checks
- Threat detection

[Explore Duo Advantage](#)

Most Popular

## Premier

\$9/User/Month

[Try Duo Premier](#)

[Buy Now](#)

Includes everything in Duo Advantage plus:

- A comprehensive package for complete zero trust access
- VPN-less remote access to private resources
- Complete device trust with endpoint protection check

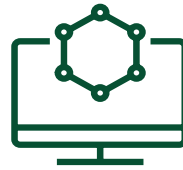
[Explore Duo Premier](#)

**Security Cloud Control**

**5**

# Cisco Security Cloud Control

Stärkung des Sicherheitsteams, indem die Firewall-Funktionen auf die Cloud ausweitet werden.



## Vereinfachung der Abläufe

Zentralisierung der Sichtbarkeit und Verwaltung von Geräten und Richtlinien.

## Verbesserung der Sicherheit

Nutzung von KI, um den Schutz zu verbessern und Ausfallzeiten zu vermeiden.

## Steigerung der Produktivität

Minimierung der Abhängigkeit von Stammeswissen und manueller Arbeit

# Einheitliches Sicherheitsmanagement

Security Cloud Control

Common experience | Central provisioning and RBAC | Cisco AI Assistant  
**Mesh Policy Engine**

Secure  
Firewall  
ASA

Secure  
Firewall  
Threat  
Defense

Multicloud  
Defense

Hypershield

Secure  
Workload

Secure  
Access

AI Defense

3<sup>rd</sup> Party  
Palo Alto  
Fortinet  
Juniper

Isovalent  
Enterprise  
Platform

